

EN

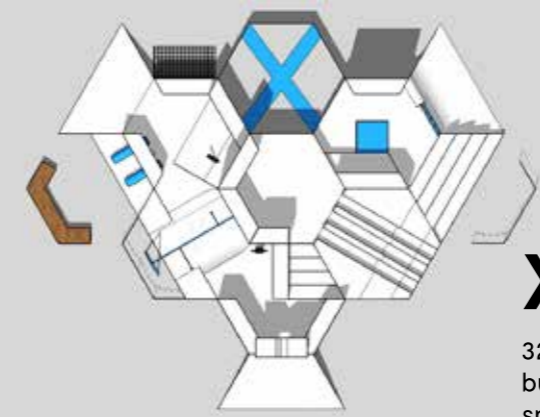
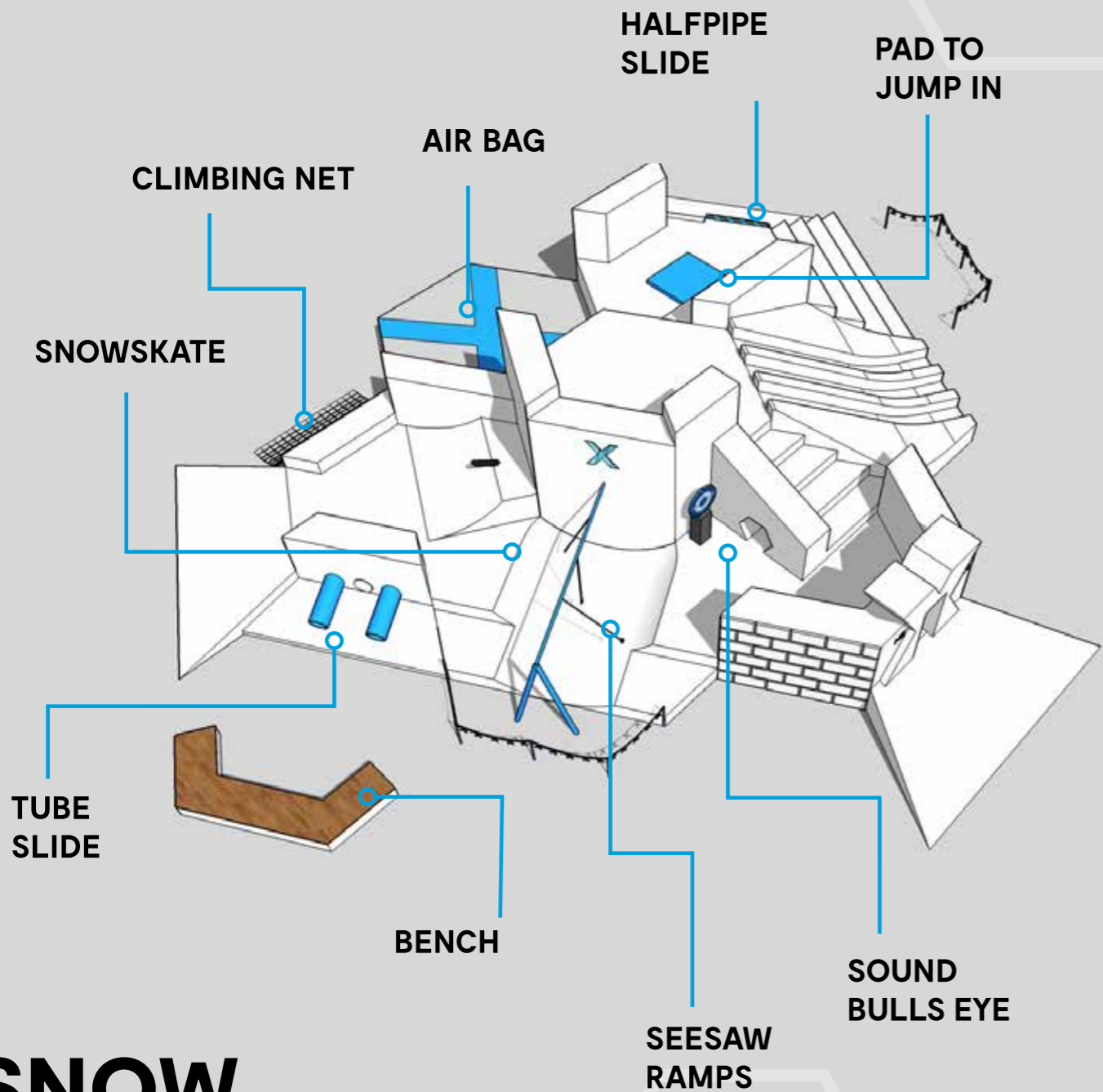
SCHNEESTERN

action sports engineered

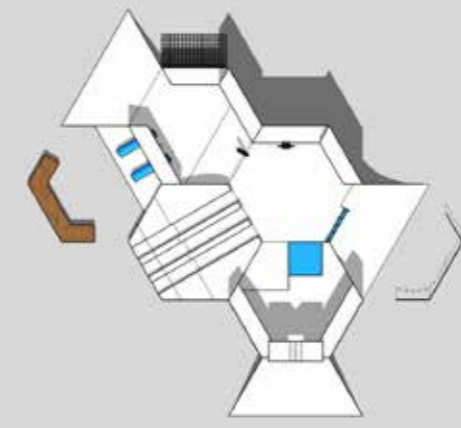


HE X AGON

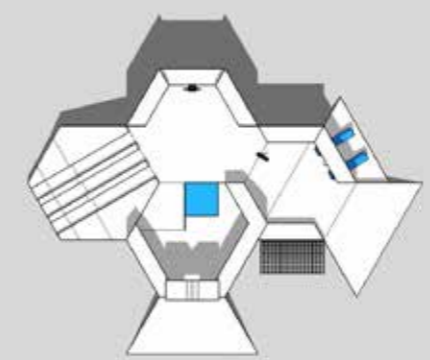
What is a HEXAGON?



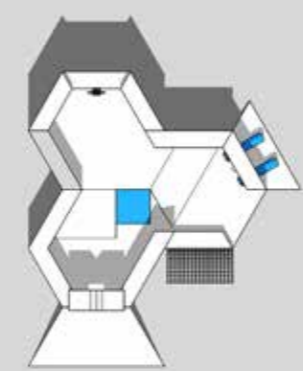
XL
32x24m
building area: 780 m²
snow volume: 1500 m³



L
26x24m
building area: 630 m²
snow volume: 900 m³



M
24x17m
building area: 420 m²
snow volume: 700 m³



S
15x17m
building area: 320 m²
snow volume: 520 m³

You put a snow castle in front of kids and the first thought is: „Girls can only be princesses and every boy automatically is a knight?“

We think: „Nonsense!“ In our snow playgrounds there is no role allocation, but only two things: a lot of action and fun! These themes are manifested in our DNA and that is why in our HeXagon kids will not find dragons or butterflys but halfpipe slides, snowskates, airbags and a lot more.

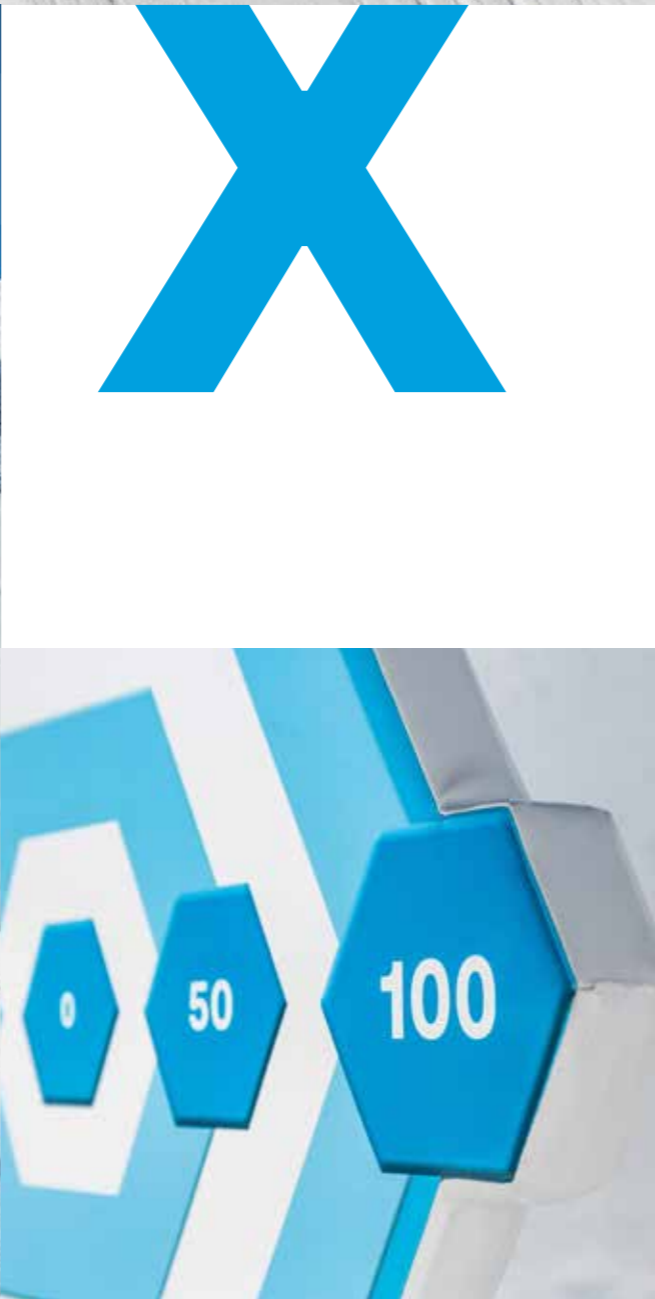
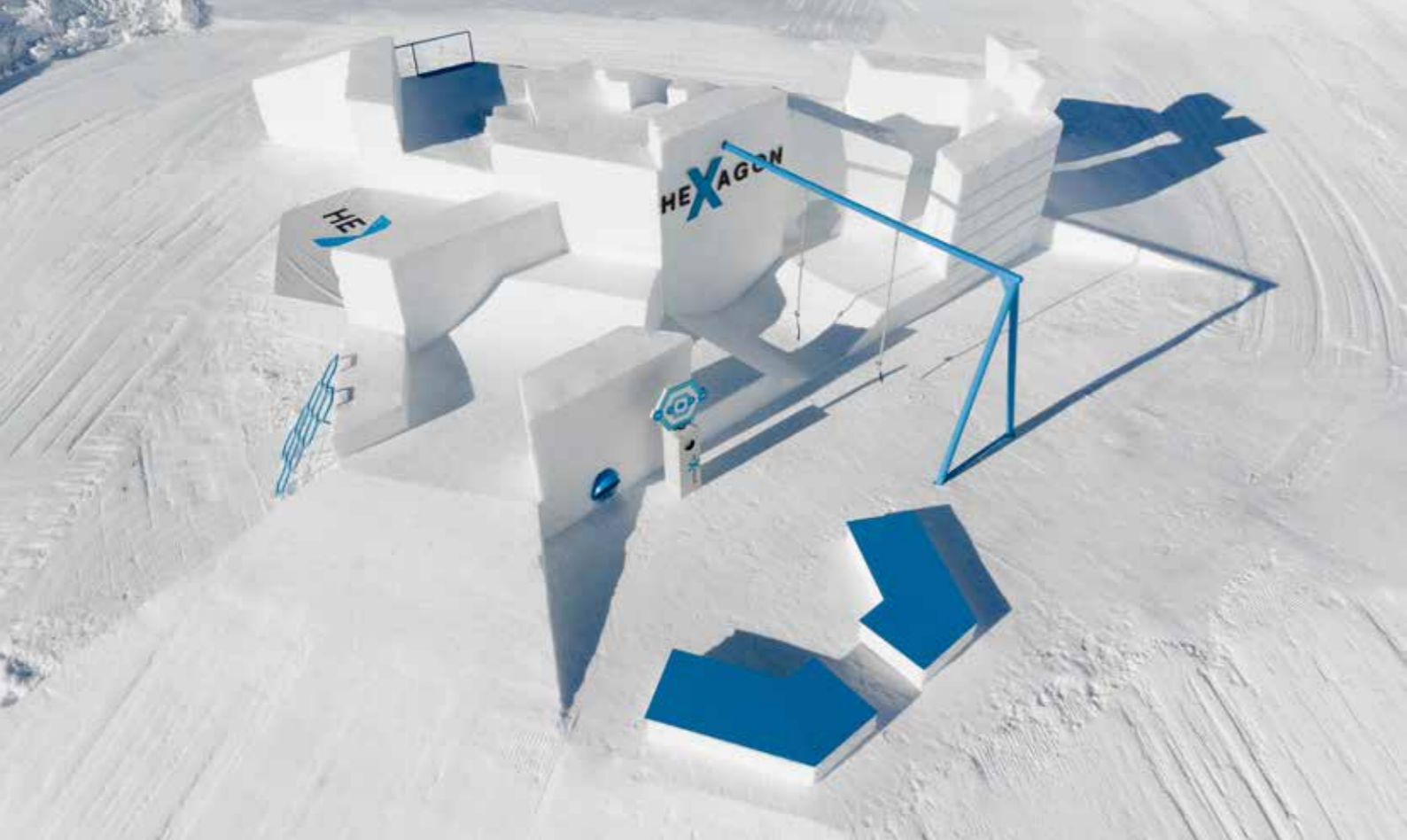
Kids want to have variation and in the HeXagon they will find action (sports)...knights and princesses will be found in the carnival again.

What are the target groups of a Hexagon?

Kids & Families:

- Kids
- Recreational skier/ snowboarder
- Freestyle beginners
- Winter sports beginners
- Non-Skiers

SNOW CASTLES
WE ONLY MAKE THESE HUGE



Product features

Safety

Action Sports are safe! We are convinced by that and therefore safety is our priority number one. To ensure this, our safety concept runs like a golden thread through our entire company. Here are our three "components" for a safe HeXagon:

1. Built in compliance with playground standards

Safety in snowparks is a big responsibility. For this reason, we take the current safety standard for playgrounds (DIN EN1176) such as heights, safe distances, stability, etc. into account, while planning and constructing a HeXagon. In addition to that we can arrange after the build-up a legally binding safety check of our "snow playground" by the TÜV.

2. TÜV certified production

To talk about safety in action sports is one thing, to prove it the other. In addition to the Schneestern quality checks, our production site undergoes an independent quality and safety inspection by the TÜV since 2008.

3. Safety by Schneestern

When building a HeXagon we bring our full know-how from building snowparks for more than 20 years to bear. Thanks to this expertise, we know that in order to ensure consistent safety, daily maintenance is essential. We want to meet this demand by offering three customer-friendly models.

- Daily maintenance by Schneestern professionals
- Training of your employees
- Weekly checks and approval by Schneestern Professionals



Services individually bookable

Perfekt for Non-Skiers

Non-skiers are a growing and prospectively extremely important target group for Winter sports resorts. This can range from course participants in the lunch break or to grandma & grandpa with the grandson, there are many non-skiers for whom a nice winter's day truly is a highlight - even without ski or snowboard. With the HeXagon you can activate this target group and draw them into the center of your winter sports resort.



Exciting action sports theme

For us a clear signal: Action sports are becoming a crucial factor for success. An oversupply with various sports and leisure activities increases the competitive pressure on winter sports areas...guests and especially kids want a „wow effect“. The HeXagon exactly provides that: action sports as a cool theme and therefore a whole lot of excitement and entertainment.

Easy plannable product – cost estimate in less than 10 minutes

The right product selection is the foundation for success. For a clear and streamlined process, we have designed the HeXagon as a product that is easy to plan and calculate. The modular HeXagon design makes it easy and fast to choose the desired equipment individually. In addition, you can use our cost table to estimate your costs in less than 10 minutes.





20 years of Schneestern

**SINCE 1999
OVER 400
PROJECTS &
15.000
OBSTACLES
WORLDWIDE**



Our
SI/10W catalogues:



Get your free copy now!



action sports engineered